

INDUSTRY APPLICATION

RETAIL

- Inventory; Mark-downs
- Shelf replenishment
- Price verification
- Assisted sales
- Self-shopping; Queue-busting
- mPOS (mobile POS)
- Picking; Put away
- Shipping & Receiving
- Cross docking



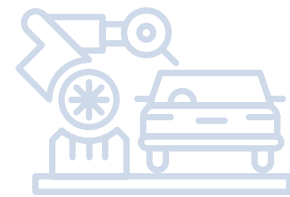
T&L

- Picking and Receiving
- Cross docking
- Warehousing
- Inventory
- Field applications



MANUFACTURING

- Quality control
- Inventory
- Warehousing
- Asset tracking



HEALTHCARE

- Bedside point of care
- Pharmacy
- Inventory
- Patient management
- Specimen collection

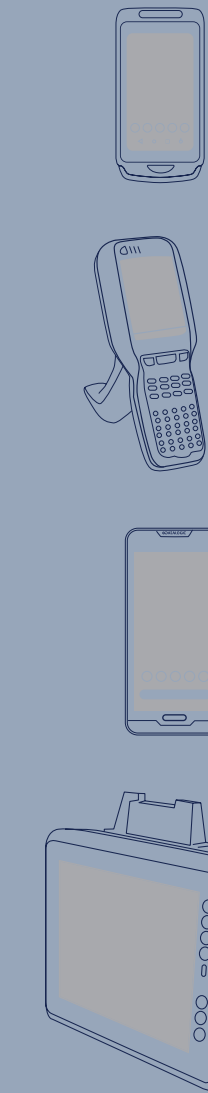


© 2020 Datalogic S.p.A. and/or its affiliates. All rights reserved. Without limiting the rights under copyright, no part of this documentation may be reproduced, stored in or introduced into a retrieval system, or transmitted in any form or by any means, or for any purpose, without the express written permission of Datalogic S.p.A. and/or its affiliates. Datalogic and the Datalogic logo are registered trademarks of Datalogic S.p.A. in many countries, including the U.S. and the EU. Falcon, Joya logo and Lynx are trademarks of Datalogic S.p.A. and/or its affiliates, registered in many countries, including the U.S. and the EU. Memor, DL-Axis, Rhino and Skorpio are trademarks of Datalogic S.r.l. and/or its affiliates. SH15 Blackline and SH21 Blackline are trademarks of Soredi Touch Systems GmbH. The Bluetooth word mark and logos are trademarks owned by Bluetooth SIG, Inc. and any use of such marks by Datalogic Group companies is under license. Android is a trademark of Google LLC. All other trademarks and brands are property of their respective owners. Product specifications are subject to change without notice. PG-MC-EN Revision C 20201301

www.datalogic.com

MOBILE COMPUTERS

Product Guide



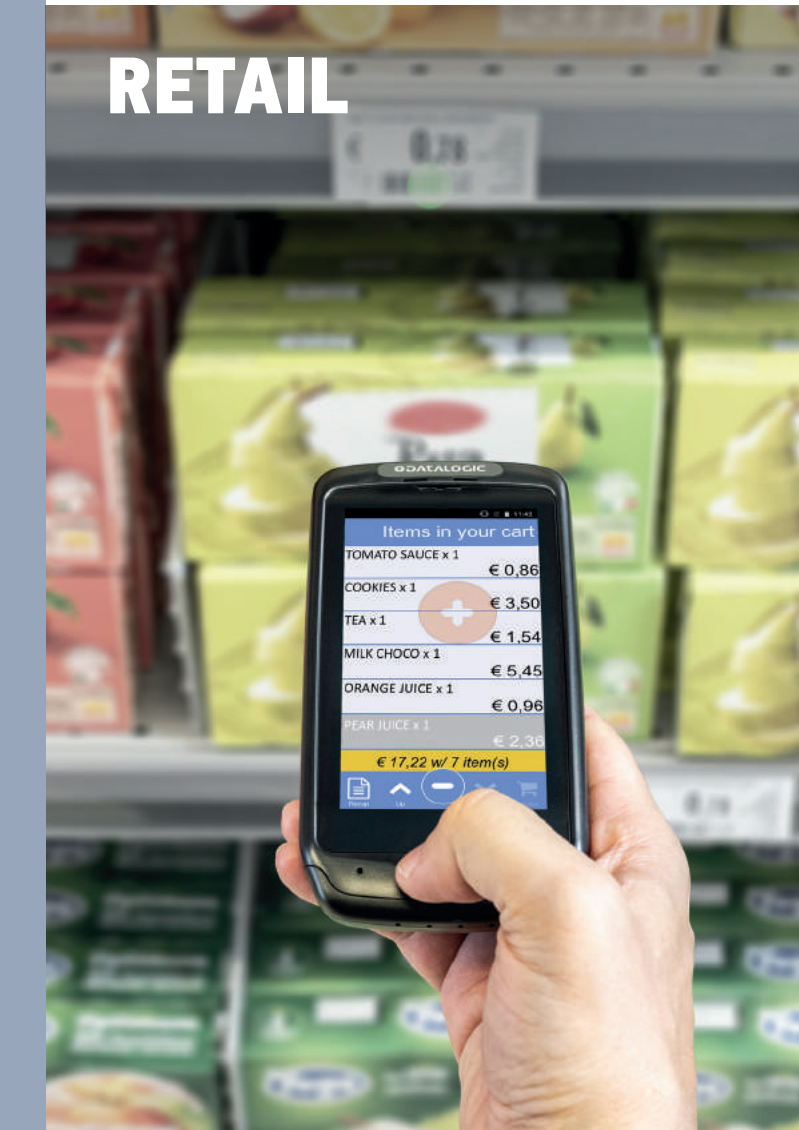
MOBILE COMPUTERS

Datalogic's mobile computer product line offers a wide range of devices suitable for any kind of indoor or outdoor application. Ranging from full touch devices to keyboard devices, the Datalogic portfolio provides state-of-the-art technology and features such as wireless charging, the latest Android™ operating system and high performance scan engines. Datalogic mobile computers are available in different form factors, display sizes, keyboard combinations and operating systems to meet the most advanced needs of our customers.

Technologies

- Wireless charging
- 1D and 2D scanners
- Android and Windows Operating Systems
- Rugged enclosures
- Crystal clear color displays
- Smart docks
- Multi-Core chipsets
- Automatic staging, configuration and management software tools
- Full connectivity options for indoor and outdoor

RETAIL



MANUFACTURING



MOBILE COMPUTERS

	JOYA™ TOUCH A6 HEALTHCARE / RETAIL	JOYA™ TOUCH WEC7	MEMOR™ X3 / MEMOR™ X3 HEALTHCARE	MEMOR™ 1	MEMOR™ 10	MEMOR™ 20	SKORPIO™ X4	FALCON™ X3+	FALCON™ X4	RHINO II™ VEHICLE MOUNT COMPUTER	BLACKLINE SH15	BLACKLINE SH21	TASKBOOK
													
	The Joya™ Touch A6 is a state-of-the-art Android™ based mobile computer. Available and ideal for various retail applications or various healthcare and hospital applications. Available as a hand held version or pistol grip version.	The Joya™ Touch is a multi-purpose device for use throughout retail to optimize your ROI. It is designed for use in Self-Shopping, Shop Floor, Access Control and more. Available as a hand held version or pistol grip version.	The most compact and lightweight Mobile Computer in its class, ideal choice for entry-level applications and capturing 1D/Linear codes Choice of laser or linear imaging technologies. Also available in a healthcare model.	The Memor 1 device comes with a powerful Qualcomm Snapdragon platform and features Android™ 8.1 (Oreo) with GMS. This device is available in two form factors: a hand held version resembling a rugged smartphone or a pistol grip version with a comfortable trigger.	The Memor 10 incorporates the latest smartphone technologies and the user friendly experience of Android™ in a slim and compact design, combined with high performance 1D/2D bar code scanning and industrial robustness for almost any indoor or outdoor environment.	The Memor 20 combines a slim and compact design, a stunning 5.7" full HD display, and a unique secondary notification display with high performance 1D/2D barcode scanning and industrial robustness for almost any indoor or outdoor environment.	The Skorpio™ X4 mobile computer features a high performance architecture that offers blazing speed for legacy applications while providing an easy migration path to Android™.	Rugged ergonomics combine in a fully-featured mobile computer to provide the ultimate performance in Warehousing and T&L. 1D laser and 2D imaging technologies available.	The Falcon™ X4 mobile computer features a high performance multi-core 1 GHz architecture that offers blazing speed when running Windows Embedded Compact OS and is easily upgradeable to the Android™ OS.	The Rhino II™ vehicle mount computers, available in both 10" and 12" display sizes, sets the standard for ruggedness in the warehouse. Rhino II offers a choice of WEC7, WES 7, Windows 10 IoT Enterprise or Android 7.1 operating systems.	The SH15 Blackline computer is a 15 inch rugged vehicle mount computer (VMC) as well as a fixed mount unit for use in any industrial application. It increases productivity through reduced errors during all scanning activities.	The SH21 Blackline computer is a 21 inch industrial computer designed for wall or fixed mount industrial applications. It increases productivity by allowing a high level of interaction between operators and machines.	Available in two form factors of 7 inch and 10 inch with a sealed design tested to IP65 and resistant at 1.2 m /4 ft drop, the TaskBook represents the perfect rugged tablet for indoor warehouses operations.
APPLICATIONS													
Retail	X	X	X	X	X	X	X	X	X	X			X
Manufacturing	X			X	X	X	X	X	X		X	X	X
Transportation & Logistics	X			X	X	X	X	X	X		X	X	X
Healthcare	X		X		X	X	X		X				X
FEATURES													
Operating System	Google Android 7.1 (Nougat)	Windows Embedded Compact 7	Win CE 6.0 Pro; CE 6.0 Core	Google Android 8.1 (Oreo) with Google Mobile Services (GMS)	Google Android 8.1 (Oreo) with Google Mobile Services (GMS) and Android Enterprise Recommended (AER)	Google Android 9 (Pie) with Google Mobile Services (GMS) and Android Enterprise Recommended (AER)	Windows Embedded Compact 7 / Android v4.4	Windows CE 6.0 Professional WEHH 6.5	Windows Embedded Compact 7 / Android v4.4	WEC7, Windows Embedded Standard 7, Windows 10 IoT Enterprise 64 bit, Android 7.1	Windows Embedded Standard 7 or Windows 10 IoT Enterprise 64 bit	Windows Embedded Standard 7 or Windows 10 IoT Enterprise	Windows® 10 IoT Enterprise 64-bit
CPU, Processor	Qualcomm Snapdragon Quadcore 1 GHz	XScale™ PXA310 @ 806 MHz	XScale™ PXA310 @ 806 MHz on Win CE 6.0 Pro; 624 MHz on Win CE 6.0 Core	Qualcomm Snapdragon Quad-core 1 GHz	2 GHz Octa-core	2.2 GHz Octa-core Qualcomm Snapdragon 660 2.2Ghz	TI OMAP4 @ 1 GHz	XScale PXA310 @ 806 MHz; Cortex-M3, 32 bit	TI OMAP4 @ 1 GHz	Proc. ARM 4 x 1.0 GHz; Intel E3826 2 x 1.46 GHz	Intel Atom E3845 Quad Core 1.91 GHz; Intel i5-5350U Dual Core 1.8 GHz	Intel Atom E3845 Quad Core 1.91 GHz; Intel i5-5350U Dual Core 1.8 GHz	Intel E3826 2 x 1.46GHz
Memory: RAM / ROM	RAM: 2 GB; Flash: 16 GB Flash	Basic: RAM: 512 MB; Flash: 512 MB Plus: RAM: 512 MB; Flash: 1 GB	Flash: 512 MB; RAM: 256 MB Win CE Pro; 128 MB Win CE Core	RAM: 2 GB; Flash: 16 GB	RAM: 3 GB; Flash: 32 GB	RAM: 4 GB; Flash: 64 GB	RAM: 1 GB; Flash: 8 GB	RAM: 256 MB; Flash: 1 GB	RAM: 1 GB; Flash: 8 GB	RAM: 4 GB (Arm); 4 GB (Intel)	RAM: 4 GB (Quad Core); 16 GB (i5)	RAM: 4 GB (Quad Core); 16 GB (i5)	RAM: 4 GB
Display	TFT-LDC color display; FWVGA 854 x 480 px	TFT-LDC color display; FWVGA 854 x 480 px	TFT color display QVGA, 240 x 320 px; 2.4 in diagonal	4.3" TFT-LDC color display; FWVGA 854 x 480 px	5.0" IPS; 720 x 1280 px HD resolution	5.7" LTPS in 18:9 format - FHD resolution 1080 x 2160; LED backlight Second display on top for enriched Android notifications: 0.7 inch POLED	Transflective TFT / LCD, QVGA 240 x 320 px; 3.2 in diagonal	CE: TFT-LDC color display; QVGA 240 x 320 px; 3.5 in diagonal; WEHH: 640 x 480 px	Transflective TFT / LCD, QVGA 240 x 320 px; 3.5 in diagonal	SH15 XGA 1024 x 768, 400 NITS	SH21 FHD 1920 x 1080, 350 NITS		7 inch: WSVGA 1024 x 600, 420 cd/m²; 10 inch: WXGA 1280 x 800, 350 cd/m²
1D/Linear Codes/2D Codes/2D Imager	X	X	X	X	X	X	X	X	X				
Wireless Charging	X	X		X	X	X							
COMMUNICATIONS													
Local Wireless Radio (Wi-Fi, Bluetooth®)	IEE 802.11 a/b/g/n; Bluetooth® v4.0/BLE	Laird/Summit IEE 802.11 a/b/g/n Cisco CCX v4; Bluetooth® v4.0/BLE	Laird/Summit IEE 802.11 a/b/g/n Cisco CCX v4; Bluetooth® w/EDR, Class 2	IEE 802.11 a/b/g/n; Bluetooth® v4.0/BLE	Bluetooth® v4.2 (Classic Bluetooth wireless technology and BLE)	IEEE 802.11 a/b/g/n/ac and 802.11 d/e/h/k/r/v/w; Bluetooth® v5.0 (Classic Bluetooth wireless technology and BLE)	TI Wi-Link 8, IEEE 802.11 a/b/g/n; Bluetooth® v4 w/BLE (Android models); Bluetooth® v2.1 + EDR (WEC7 models); MIMO	Laird/Summit IEE 802.11 b/g/n Cisco CCX v4; Bluetooth® v2.1 with EDR	TI Wi-Link 8, IEEE 802.11 a/b/g/n; Bluetooth® v4 / BLE (Android models); Bluetooth® v2.1 + EDR (WEC7 models); MIMO	Wi-Fi 802.11 a/b/g/n (2.4 & 5 GHz); Cisco CCX v4; Bluetooth® v4.0	Wi-Fi 802.11 a/b/g/n (2.4 & 5 GHz); Cisco CCX v4; Bluetooth® v4.0	Wi-Fi 802.11 a/b/g/n (2.4 & 5 GHz); Cisco CCX v4; Bluetooth® v4.0	Wi-Fi 802.11 a/b/g/n/ac/r; Bluetooth® v4.0
Wireless Wide Area Network (WWAN)					LTE-Advanced/4G+; Cat 6	LTE-Advanced/4G+; Cat 9							
Wired Communications	USB 2.0 Client	USB 2.0 Client	RS-232; USB	USB 2.0 Client	USB 2.0 Client	High Speed USB 3.1 gen1 Host and Client	RS-232; USB; Ethernet	USB; RS-232; Ethernet	USB; RS-232; Ethernet	Ethernet; USB; RS-232 (5 and 12 V)	Ethernet; USB; RS-232 (5 and 12 V)	Ethernet; USB; RS-232 (5 and 12 V)	On the device: USB-C On the docking station: Ethernet; USB; RS-232
OPTIONS													
Keypad / Keyboard Options	Fully programmable key	Fully programmable key	25-Key	Fully programmable key	3 programmable keys	3 Android Softkeys	50-key full alphanumeric, 38-key functional; 28-key numeric keyboard	29-Key (also in functional version); 52-Key	29-Key (also in functional version); 52-Key	4 programmable keys; Customizable Software Keyboards	4 programmable keys; Customizable Software Keyboards	4 programmable keys; Customizable Software Keyboards	1 programmable key; Customizable Software Keyboards
Camera	Black & White image capture via scanner				13 megapixel color	Rear Camera 13 mP, front camera 8MP		3.1 Megapixel color					5mpx rear camera
Voice Capability	VoIP			VoIP	VoIP	VoIP							
RUGGEDNESS / DURABILITY													
IP Rating			IP54		IP65	IP65/67	IP64	IP65	IP65	IP65 / IP67	IP65 / IP67	IP65 / IP67	IP65
Drop to Concrete	1.2 m / 4.0 ft	1.2 m / 4.0 ft	1.2 m / 4.0 ft	1.2 m / 4.0 ft; 1.5 m / 5.0 ft	1.5m / 5ft	1.8 m / 6.0 ft	1.8 m / 6.0 ft	1.8 m / 6.0 ft	1.8 m / 6.0 ft				1.2 m / 4.0 ft
Operating Temperature	-10 to 50 °C / 14 to 122 °F	-10 to 50 °C / 14 to 122 °F	-10 to 50 °C / 14 to 122 °F	-10 to 50 °C / 14 to 122 °F	-20 to 50 °C / -4 to 122 °F	-20 to 50 °C / -4 to 122 °F	-10 to 50 °C / 14 to 122 °F	-20 to 50 °C /-4 to 122 °F	-20 to 50 °C /-4 to 122 °F	Standard Model: -20 to 50 °C / -4 to 122 °F Freezer Model: -30 to 50 °C / -22 to 122 °F	-20 to 55 °C / -4 to 131 °F	-20 to 55 °C / -4 to 131 °F	-20 to 55 °C / -4 to 131 °F
Weight	Hand held 275 g / 9.7 oz Pistol grip: 305 g / 10.7 oz	Hand held 275 g / 9.7 oz Pistol grip: 305 g / 10.7 oz	233 g / 8.2 oz Healthcare: 250 g / 8.8 oz	Hand held: 275.0 g / 9.7 oz Pistol grip: 305.0 g / 10.7 oz	285.0 g / 10.0 oz	295 g / 10.4 oz	Hand held (w/stan. battery): 388 g / 13.7 oz Pistol grip (w/stan. battery): 482 g / 17.0 oz	Hand held: 608.0 g / 21.4 oz Pistol grip: 674.0 g / 23.8 oz	Hand held: 602.0 g / 21.4 oz Pistol grip: 668.0 g / 23.6 oz	10 in. Freezer Model: 3.4 Kg / 7.5 lb 10 in. Standard Model: 3.6 Kg / 7.9 lb 12 in. Standard Model: 4.7 Kg / 10.4 lb	6.5 Kg / 14.3 lbs	10.8 Kg / 23.8 lbs	7 inch: 733 g / 25.8 oz 10 inch: 1044 g / 36.8 oz

MOBILE COMPUTERS

VEHICLE MOUNT COMPUTER

SOFTWARE & TOOLS

SOFTWARE

All Datalogic CE mobile devices are pre-licensed and pre-installed with **Wavelink Avalanche®** software. This remote device management software substantially increases productivity and lowers the Total Cost of Ownership through the centralized monitoring and control of software, firmware and configuration upgrades.

Datalogic WebSentinel Predict

Cloud-based data gathering and analytics suite

- Comprehensive battery analytics
- System health monitoring
- Integration with Datalogic WebRMA, MyOrders, and MyCases Support Tools
- Intuitive, Configurable Dashboard
- Alerts and Notifications
- Asset and User Management Features
- Multiple and Automated Device Enrollment
- Ad-Hoc and Scheduled Reports



Datalogic Shield

Subscription for predictable, recurring Android software updates*:

- Includes quarterly security patches based on the Android Security Bulletins: <https://source.android.com/security/bulletin>
- Includes firmware fixes and enhancements
- Android major version (dessert) upgrades included
- Support for 2 years after device's end of sale
- 12 month transition support for prior Android versions
- Automatic customer notifications of new updates

* Subject to Datalogic Shield or Ease of Care Terms & Conditions



		Joya Touch WEC7	Joya Touch Android	Memor X3	Memor 1	Memor 10	Memor 20	Skorpio X4 WEC7	Skorpio X4 Android	Falcon X3+	Falcon X4 WEC7	Falcon X4 Android	Rhino II WEC7	Blackline SH15/SH21	Taskbook
DEVELOPMENT	Windows SDK	X		X				X		X	X		X		X
	Android SDK (Java, Xamarin)		X		X	X	X		X			X			
TERMINAL EMULATION	Wavelink® Studio™			X				X		X					
	Wavelink® Terminal Emulator (TE)	X		X		X	X	X		X	X		X	X	X
	Wavelink® Velocity		X		X	X	X		X			X			
	Wavelink® Velocity CE	X						X		X					
MOBILE DEVICE MANAGEMENT	StayLinked	X	X		X	X	X	X	X	X		X	X	X	X
	SOTI MobiControl	X	X	X	X	X	X	X	X	X	X	X	X	X	X
	Wavelink® Avalanche™	X	X	X	X	X	X	X	X	X	X	X	X	X	X
	42Gears SureMDM	X	X	X	X	X	X	X	X	X	X	X	X	X	X
CONFIGURATION	VMWare AirWatch		X		X	X	X		X			X			
	Datalogic xPlatform Utility (DXU)	X	X		X	X	X	X	X		X	X	X		
	Datalogic Configuration Utility (DCU)			X						X					
	Datalogic Firmware Utility (DFU)			X						X					
MISC.	Pal™ Application Suite			X				X		X	X				
ANALYTICS	WebSentinel™ Predict		X		X	X	X								