

## Product overview 6 Technologies

Handling technology  
Damping technology  
Linear technology  
Process technology  
Tooling technology  
Machine tooling technology

THE KNOW-HOW FACTORY





**"WE ARE PLEASED TO BE TAKING A MAJOR STEP INTO THE FUTURE WITH ZIMMER GROUP. THE UMBRELLA BRAND ZIMMER GROUP SYMBOLIZES OUTWARDLY WHAT WE HAVE ALREADY INTERNALIZED—THE UNITY OF PREVIOUSLY SEPARATE COMPANIES.**

**AS ZIMMER GROUP, OUR FAMILY-RUN ENTERPRISE CAN DELIVER EVEN GREATER VALUE AND SUPPORT FOR OUR CUSTOMERS.**

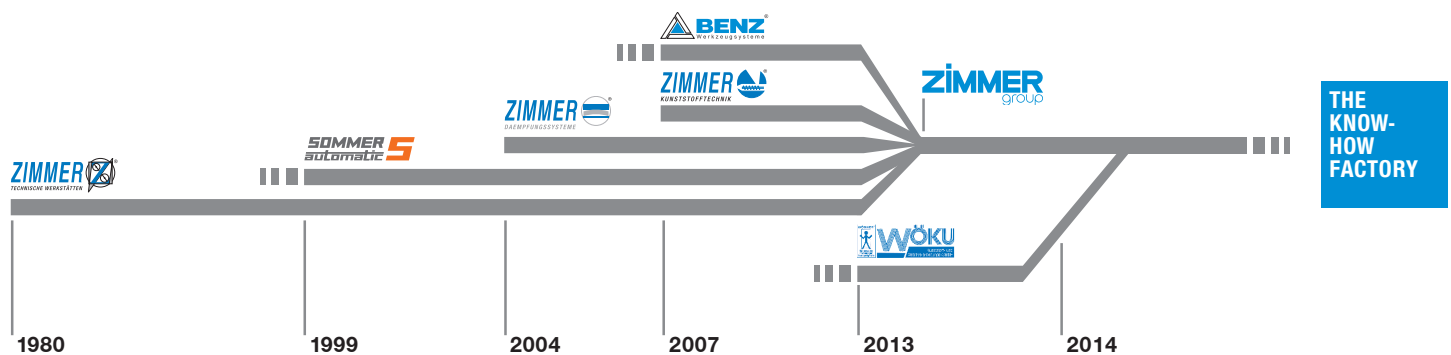
**NOW AND IN THE FUTURE. CONTINUING OUR INTERNATIONALIZATION, ENGAGING WITH ALL INDUSTRIES, AND SOLVING ALL TYPES OF DEVELOPMENT TASKS ARE SOME OF THE CHALLENGES THAT WE WILL OVERCOME AS THE KNOW-HOW FACTORY."**

**GÜNTHER ZIMMER, MARTIN ZIMMER AND ACHIM GAUSS**

**Managing Directors, from left to right**



# ZIMMER GROUP COMMITTED TO OUR CUSTOMERS



**WE HAVE SUCCEEDED FOR YEARS BY OFFERING OUR CUSTOMERS INNOVATIVE AND INDIVIDUALIZED SOLUTIONS. ZIMMER HAS GROWN CONTINUOUSLY AND TODAY WE REACHED A NEW MILESTONE: THE ESTABLISHMENT OF THE KNOW-HOW FACTORY. IS THERE A SECRET TO OUR SUCCESS?**

**Foundation.** Excellent products and services have always been the foundation of our company's growth. Zimmer is a source of ingenious solutions and important technical innovations. This is why customers with high expectations for technology frequently find their way to us. When things get tricky, Zimmer Group is in its best form.

**Style.** We have an interdisciplinary approach to everything we do, resulting in refined process solutions in six areas of technology. This applies not just to development but to production. Zimmer Group serves all industries and stands ready to resolve even unique and highly individualized problems. Worldwide.

**Motivation.** Customer orientation is perhaps the most important factor of our success. We are a service provider in the complete sense of the word. Even our decision to identify ourselves as Zimmer Group reflects this reality. With Zimmer Group, our customers now have a single, centralized contact for all of their needs. We approach each customer's situation with a high level of competence and a broad range of possible solutions.



# TECHNOLOGIES



## HANDLING TECHNOLOGY

WITH MORE THAN 30 YEARS OF EXPERIENCE AND INDUSTRY KNOWLEDGE, OUR PNEUMATIC, HYDRAULIC, AND ELECTRICAL HANDLING COMPONENTS AND SYSTEMS ARE GLOBAL LEADERS.

**Components.** More than 2000 standardized gripper systems, positioning systems, robot tools and much more. We offer a complete selection of technologically superior products that are ready for rapid delivery.

**Semistandard.** Our modular approach to design enables custom configurations and high rates of innovation for process automation.

**Systems.** We are particularly strong in providing custom system solutions for handling technologies, robotics and vacuum engineering.



## DAMPING TECHNOLOGY

INDUSTRIAL DAMPING TECHNOLOGY AND SOFT CLOSE PRODUCTS EXEMPLIFY THE INNOVATION AND PIONEERING SPIRIT OF THE KNOW-HOW FACTORY.

**Industrial damping technology.**

Whether standard or customized solutions, our products stand for the highest cycle rates and maximum energy absorption with minimal space requirements.

**Soft close.** Development and mass production of pneumatic and hydraulic dampers with extraordinary quality and rapid delivery.

**OEM and direct.** Whether they need components, returning mechanisms or complete production lines—we are the trusted partner of many prestigious customers.

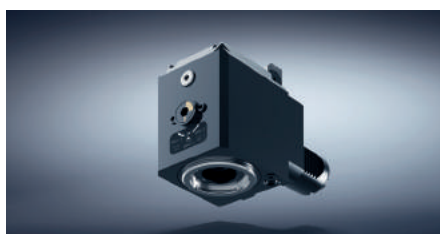


## LINEAR TECHNOLOGY

WE DEVELOP LINEAR COMPONENTS AND SYSTEMS THAT ARE INDIVIDUALLY ADAPTED TO OUR CUSTOMERS' NEEDS.

**Clamping and braking elements.** We offer you more than 4000 types for profiled and rounded rails as well as for a variety of guide systems from all manufacturers. It makes no difference whether you prefer a manual, automatic, electric or hydraulic drive.

**Individualized systems.** The unique functionality and precision of our clamping and braking elements open up numerous possibilities for custom applications such as active or semi-active braking and damping.



## PROCESS TECHNOLOGY

MAXIMUM EFFICIENCY IS ESSENTIAL FOR SYSTEMS AND COMPONENTS USED IN PROCESS TECHNOLOGY. HIGH-LEVEL CUSTOM SOLUTIONS ARE OUR TRADEMARK.

**A rich reservoir of experience.** Our know-how ranges from the development of materials, processes and tools through product design to production of series products. Challenge us.

**Deep production capabilities.** The Zimmer Group pairs these capabilities with flexibility, quality and precision, even when making custom products.

**Series production.** We manufacture demanding products out of metal (MIM), elastomers and plastics with flexibility and speed.

## TOOLING TECHNOLOGY

ZIMMER GROUP DEVELOPS INNOVATIVE METAL, WOOD AND COMPOSITE MATERIAL PROCESSING TOOL SYSTEMS FOR ALL INDUSTRIES. NUMEROUS CUSTOMERS CHOOSE US AS THEIR SYSTEMS AND INNOVATION PARTNER.

**Knowledge and experience.** Industry knowledge and a decades-long development partnership for exchangeable assemblies, tool interfaces and tool systems make us the ideal choice for new challenges around the world.

**Components.** We deliver numerous standard components from stock and develop innovative, customized systems for OEM and end customers – far beyond just the metal- and wood-processing industries.

**Variety.** Whether you have machining centers, lathes, or flexible production cells, the power tools, holders, assemblies and drilling heads of Zimmer Group are ready for action.

## MACHINE TOOLING TECHNOLOGY

AS A DRIVING FORCE IN OUR INDUSTRY, WE DELIVER HIGH-VALUE SOLUTIONS IN THE FIELD OF MECHANICAL ENGINEERING, FULLY ACCORDING TO THE NEEDS OF OUR CUSTOMERS.

**Development partner.** We accompany you from brainstorming to inspection of the final machine, always according to your expectations.

**Components.** We deliver series products and modules, five-axis heads, motor spindles, gearbox swiveling heads, add-on assemblies and motors.

**Systems.** The Know-how Factory stands for solutions in the fields of mechanical engineering systems, specialty solutions, custom assemblies and mechanical modules. We manufacture and configure multiple-spindle and large-angle heads as well as large drilling heads.

# HANDLING TECHNOLOGY

## GRIPPERS

### PNEUMATIC

### ELECTRIC

#### ▶ PARALLEL GRIPPERS



MGP800



GP400



GP200

Gripping Force  
6 N - 19275 N

Total Stroke  
2 mm - 80 mm



GEP9000



GEP1400

Gripping Force  
11 N - 350 N

Total Stroke  
4 mm - 12 mm

#### ▶ PARALLEL GRIPPERS WITH LONGE STROKE



MGH8000



GH6000

Gripping Force  
60 N - 8500 N

Total Stroke  
20 mm - 400 mm



GEH6000



GEH8000

Gripping Force  
1000 N - 3200 N

Total Stroke  
60 mm - 160 mm

#### ▶ CONCENTRIC GRIPPERS



MGD800



GD300



GD1700

Gripping Force  
30 N - 34700 N

Total Stroke  
2 mm - 120 mm



GED1300



GED1500

Gripping Force  
140 N - 290 N

Total Stroke  
4 mm - 12 mm

#### ▶ CONCENTRIC GRIPPERS WITH LONGE STROKE



GD500

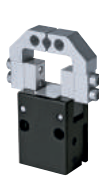
Gripping Force  
1300 N - 2480 N

Total Stroke  
60 mm - 120 mm

#### ▶ ANGULAR GRIPPERS



GZ1000



MGW800



GG1000

Gripping Force  
7 N - 29110 N

Total Stroke  
16° - 180°

# HANDLING TECHNOLOGY

## GRIPPERS FOR SPECIAL TASKS

### PNEUMATIC

### ELECTRIC

#### ► INTERNAL GRIPPERS



LG1000



LGS



LGG



Customer-specific

Gripping Force  
12 N - 3500 N

Gripping Diameter  
4 mm - 120 mm

#### ► EXTERNAL GRIPPERS



RG

Gripping Diameter  
0 - 58 mm

#### ► NEEDLE GRIPPERS



ST



SCH

Needle Stroke  
0 - 6 mm



GEN9100

Needle Stroke  
0 - 2 mm

#### ► O-RING ASSEMBLY GRIPPERS



GS



GSI

O-Ring Assembly  
Grippers  
4 mm - 130 mm

#### ► MAGNETIC GRIPPERS



HM1000

Holding Force  
27 N - 450 N



HEM1000

Gripping Force  
27 N - 450 N

# HANDLING TECHNOLOGY

## SWIVEL- AND ROTARY COMPONENTS

### PNEUMATIC

### ELECTRIC

#### ► SWIVEL- AND ROTARY MODULES

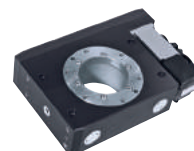


Rotary cylinders  
PRN



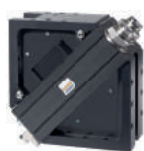
Flat Swivel Units  
SF

Torque  
0,3 - 130 Nm



Rotary Modules  
DES

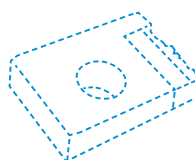
Torque  
10N - 64 Nm



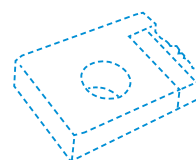
Angle Pivot Units  
SW



Swivel Jaws  
SBZ



Customer-specific



Customer-specific

#### ► ROTARY GRIPPERS



DGP400



DGK

Gripping Force  
up to 155 N

Total Stroke  
4 mm / 180°

#### ► SEPARATORS



VEG



VE

Force  
30 N - 220 N



VEE9200

Force  
8 N - 10 N

#### ► LINEAR MODULES



Linear Cylinders  
LI



Linear Rail Slides  
LSF



Lifting Cylinders  
HZ

Stroke  
7 mm - 200 mm

Max. Extension Force  
40 N - 750 N

#### ► CUTTING TONGS



ZK

Cutting diameter  
up to 11 mm

#### ► BALL JOINTS



KG



# HANDLING TECHNOLOGY

## VACUUM COMPONENTS & SYSTEMS

### VACUUM

#### ► SUCTION CUPS



Vacuum Cups  
SGF  
Suction  
Force: 0,1 N - 1042 N



Knobbes Vacuum Cups  
NS  
6 N - 628 N



Suction Plate  
SP  
274 N - 1232 N



Bellows Cup  
SF  
6 N - 443 N



Torus Vacuum Cup  
SR/SK  
Suction  
Force: 7 N - 112 N



Suction Cups oval  
OV  
2 N - 240 N



Suction Plate oval  
SPO  
1318 N



Bellows Cup oval  
SFO  
15 N - 139 N

#### ► COMPENSATION MODULES



FS

#### ► VACUUM GENERATORS



VGM

#### ► SENSING UNITS



SAM

#### ► HANDLING COMPONENTS



SHD

#### ► MCS MODULAR CONSTRUCTION SYSTEM



#### ► VACUUM SYSTEM



# HANDLING TECHNOLOGY

## ROBOTICS ACCESSORIES

### MANUALLY

### PNEUMATIC

#### ► TOOL CHANGERS



HWR

Handling Weight  
to 80 kg  
Connecting flange:  
TK 63 + 80



WW0025  
KUKA KR AGILUS

Handling Weight  
to 20 kg  
Connecting flange:  
TK 31,5



WWR-B

Handling Weight  
to 300 kg  
Connecting flange:  
TK 40-160



WWR1000

Handling Weight  
500 kg - 1000 kg  
Connecting flange:  
TK 160+200

#### ► ROTARY DISTRIBUTORS



DVR



DVR1125

Handling Weight 15 kg - 200 kg-  
Connecting flange: TK 40 - 200  
Media Transmission  
- 8 x pneumatic  
- 12 x electro  
- Profinet / Profibus

#### ► AXIS COMPENSATION MODULES



XYR1000



ARP

Handling Weight  
7 kg - 75 kg  
Connecting flange:  
TK 63 - 160

#### ► CRASH PROTECTION



CSR

Handling Weight  
6 kg - 150 kg  
Connecting flange:  
TK 50 - 160

## ANGLE FLANGE

### ▶ ADAPTERPLATTE



Connecting flange:

- TK 31,5
- TK 40
- TK 50
- TK 100
- Fanuc M10iA

### ▶ ANGLE FLANGE



Grippers to match for:

- GD304 - GD310
- GD406 - GD410

### ▶ ACCESSORIES



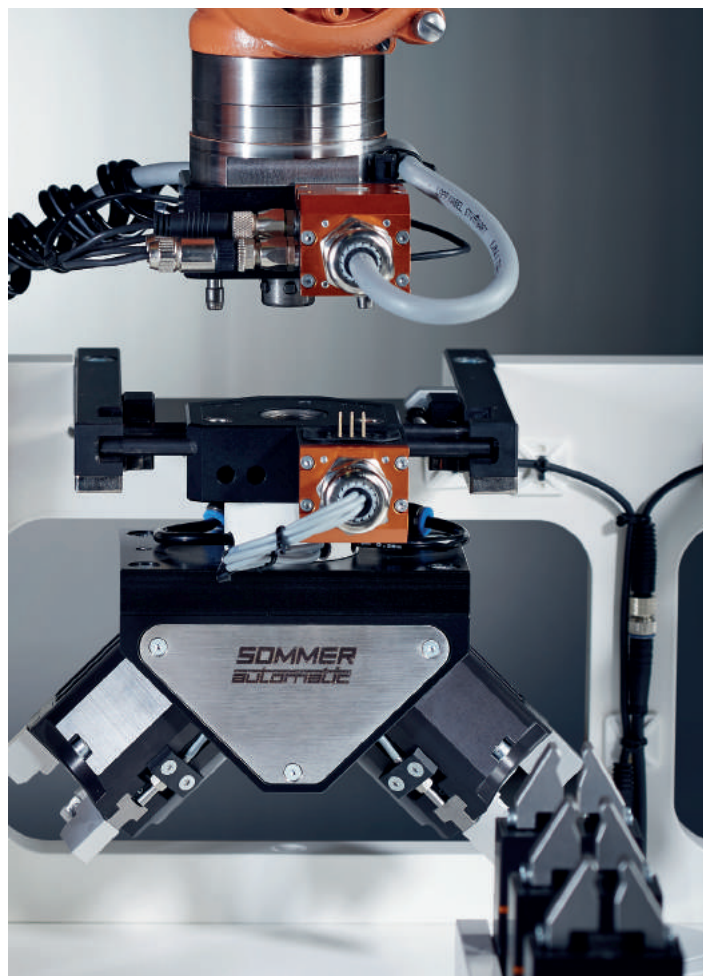
Cover Plate



Discharge Nozzle



Programming Pins



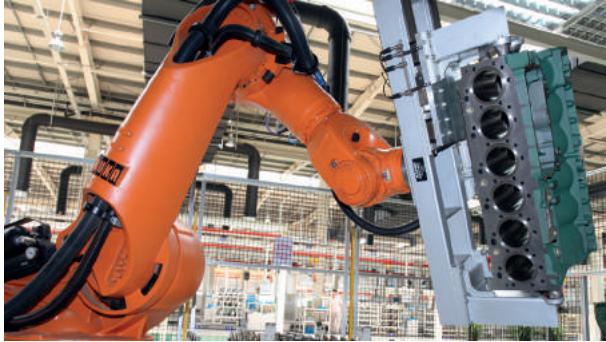


# HANDLING TECHNOLOGY

## SYSTEM SOLUTIONS



### AUTOMOTIVE



Gripping system for engine block (600 kg/ Loading and unloading of assembly stations



### MACHINE TOOL



Gripping system with tool changer for cast parts and deburring spindles/ Loading and unloading of machining center



### CONSUMER GOODS



Gripping system for yoghurt cups (different diameters)/ Unloading from forming machine and packaging in cartons



### PLASTICS TECHNOLOGY



Gripping system for fuel tanks / Loading of different assembly stations



### FOUNDRY



Gripping system for sand cores with integrated dimension adjustment / Unloading of different core feed machines






















# THE KNOW- HOW FACTORY

# DAMPING TECHNOLOGY

## SOFT CLOSE

COMPONENTS				SYSTEMS
▶ DAMPING OF DRAWERS				
				
Galante	Piccolo	Calmo	Bajo	Retro
▶	▶ DAMPING OF SLIDING DOORS			
				
Placido	Adagio	Silento	Quieto	Silento Forte
▶ DAMPING OF LIDS	▶ HINGE DAMPING			
				
Giganto	Volpino			
▶ RETROFIT SETS	▶ CUSTOMER SPECIFIC SOLUTIONS			
				
Piano	Pianino	Smuso	Customer-specific	Customer-specific

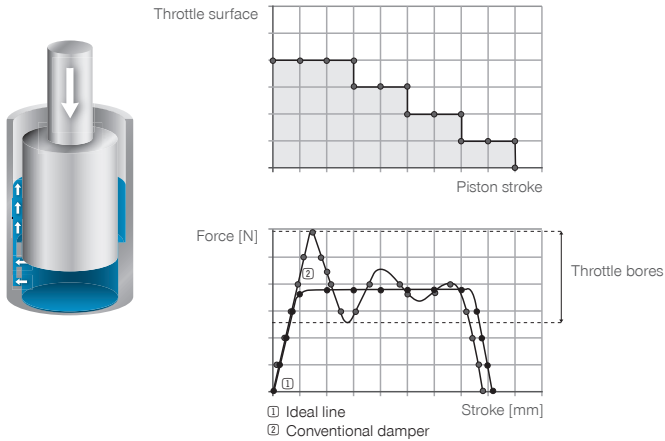
Damping of Drawers  
Damping of Sliding Doors  
Damping of Lids  
Miscellaneous applications

# DAMPING TECHNOLOGY

## INDUSTRIAL SHOCK ABSORBERS

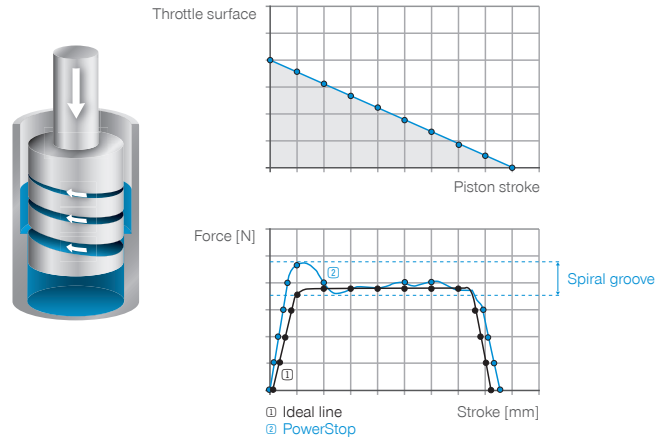
### CONVENTIONAL SOLUTION

#### ► Throttle bores



### HIGH END-SOLUTION – THE ZIMMER GROUP POWERSTOP SHOCK ABSORBERS

#### ► Spiral groove technology



### OUR EXPERTISE – YOUR ADVANTAGES

- The highest quality for the most extreme demands and loads
- High power consumption thanks to maximum utilization in each piston position
- Customized damping characteristic design for customer specific solutions
- Low-vibration and precise braking due to the constantly narrowing spiral groove
- Less wear thanks to the hydrostatic piston guide
- Longer durability and high operating safety thanks to the oil reserve
- Corrosion protection from using stainless steel
- Suitability for use in a pressure chamber up to 10 bar (only applies to the high energy variant)

### POWERSTOP STANDARD ENERGY



**new**  
M8 - M45  
Stroke 5 - 25 mm  
max. Energy Absorption  
1.5 - 350 Nm

### POWERSTOP HIGH ENERGY



M4 - M45  
Stroke 3 - 50 mm  
max. Energy Absorption  
0.5 - 1 200 Nm

### BASICSTOP AXIAL STANDARD



**new**

Height 11 - 109 mm  
Stroke 5 - 56 mm  
max. Energy Absorption  
2 - 2 950 Nm

### BASICSTOP AXIAL ADVANCED



**new**

Height 53 - 252 mm  
Stroke 30 - 198 mm  
max. Energy Absorption  
450 - 17 800 Nm

### BASICSTOP RADIAL STANDARD





**new**

Height 23 - 88 mm  
Stroke 15 - 60 mm  
max. Energy Absorption  
1.2 - 290 Nm

# LINEAR TECHNOLOGY

## OVERVIEW CLAMPING & BRAKING ELEMENTS FOR LINEAR GUIDES

PROFILE RAIL GUIDES			
MANUAL	PNEUMATIC		
clamping	clamping		clamping and braking
N	NO	NC	NC
<div> <div>HK</div> <div>  </div> <div>                     Holding force up to 2 000 N                      Standard                 </div> </div>	<div> <div>MK</div> <div>  </div> <div>                     Holding force up to 2 250 N                      Standard                 </div> </div>	<div> <div>MKS</div> <div>  </div> <div>                     Holding force up to 1 450 N                      Standard                 </div> </div>	<div> <div>MBPS</div> <div>  </div> <div>                     Holding force up to 4 700 N                      Standard                 </div> </div> <div> <div>UBPS</div> <div>  </div> <div>                     Holding force up to 7 700 N                      Standard                 </div> </div>
	<div> <div>LKP</div> <div>  </div> <div>                     Holding force up to 5 400 N                      Narrow                 </div> </div>	<div> <div>LKPS</div> <div>  </div> <div>                     Holding force up to 3 600 N                      Narrow                 </div> </div>	<div> <div>LBPS</div> <div>  </div> <div>                     Holding force up to 750 N                      Narrow                 </div> </div>
<div> <div>miniHK</div> <div>  </div> <div>                     Holding force up to 300 N                      Miniature                 </div> </div>	<div> <div>MCP</div> <div>  </div> <div>                     Holding force up to 550 N                      Miniature                 </div> </div>	<div> <div>MCPS</div> <div>  </div> <div>                     Holding force up to 400 N                      Miniature                 </div> </div>	



## PROFILE RAIL GUIDES

### HYDRAULIC

clamping

NO

**KWH**

Holding force up to  
46 000 N  
Standard

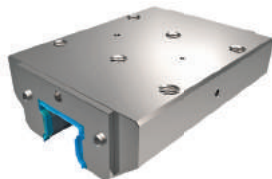


clamping and braking

NO

**KBH**

Holding force up to  
46 000 N  
Standard



NC

**KBHS**

Holding force up to  
25 000 N  
Standard



### ELECTRIC

clamping

N

**LCE**

Holding force up to  
2 000 N  
Standard



## CIRCULAR AND SHAFT GUIDES

### MANUAL

clamping

N

**HKR**

Holding force up to  
2 000 N  
Standard



### PNEUMATIC

clamping

NO

**MKR**

Holding force up to  
1 850 N  
Standard



NC

**MKRS**

Holding force up to  
1 650 N  
Standard



clamping and braking

NC

**RBPS**

Holding force up to  
35 000 N  
Standard

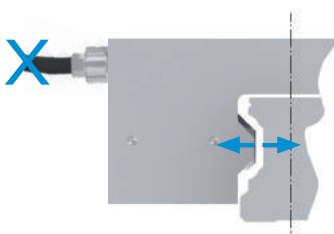


**TPS**

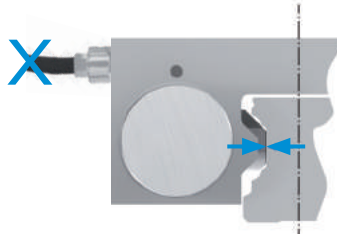
Holding torque up to  
1 000 Nm  
Rotary



**NO (normally open):**  
open without pressure



**NO (normally closed):**  
closed without pressure



**N (bistable):**  
remains in current position

# PROCESS TECHNOLOGY

## MIM TECHNOLOGY



### INNOVATIVE PROCESS FOR THE MANUFACTURING OF COMPLEX METALLIC SERIES COMPONENTS

#### Metal Injection molding

– MIM combines two familiar manufacturing technologies (injection molding technology and sintering technology)

#### Series production:

- ▶ Metal injection molding
- ▶ Plastic injection molding
- ▶ Elastomer technology

#### Advantages at a glance:

- ▶ Series production of > 10.000 parts
- ▶ Tolerances of +/- 0,05
- ▶ Complex geometries in various metals and alloys

### PROZESS CYCLE



#### METAL POWDER BINDER

#### FEEDSTOCK

The starting material consists of about 60% of the respective metal powder by volume and 40% of the binder by volume. A blend of polymers and waxes.

The homogeneous mixture of all of the components is of critical importance.

#### GREEN PART

#### INJECTION MOLDING

The binder portion is melted at elevated temperature and the highly viscous mass of metal powder and binder is then injected into a tool with the respective geometry of the specific component.

#### BROWN PART

#### DEBINDING

The majority of the binder is removed from the green parts. The remaining binder is vaporized out of the component at an increased temperature between 400 °C and 900 °C. The metal particles bind by forming what are known as sintering necks, giving the component sufficient stability.

#### METAL PART

#### SINTERING

The components are compressed at high temperatures, usually over 1000 °C. The respective temperature profile in the sinter furnace heavily depends on the material and the component geometry.

The process step has to be carefully adjusted and developed for each component geometry and each material



# THE KNOW- HOW FACTORY



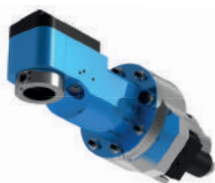
# TOOLING TECHNOLOGY

## UNITS FOR PROCESSING METAL AND WOOD / COMPOSITE MATERIALS

### METAL

#### AGGREGATES FOR MACHINING CENTRES

##### ANGLE HEADS (90°)



##### ANGLE HEADS (≠ 90°)



##### HIGH SPEED SPINDLES



##### SWIVEL HEADS



##### PUSH TYPE AGGREGATES



##### MULTI-SPINDLE HEADS



#### LIVE TOOLS

##### RADIAL UNITS (90°)



##### RADIAL UNITS (≠ 90°)



##### AXIAL UNITS



##### SWIVEL UNITS



##### PUSH TYPE AGGREGATES



##### MULTI-SPINDLE HEADS



### TOOL INTERFACE

##### BENZ SOLIDFIX®



##### BENZ CAPTO™



##### COLLET CHUCK



##### KM™





— METAL  
— WOOD / COMPOSITE MATERIALS

## WOOD / COMPOSITE MATERIALS

### TOOL HOLDERS

#### ROTATING



#### STATIC



### AGGREGATES FOR MACHINING CENTRES

#### ANGLE HEADS



#### MULTI-AXIS HEADS



#### SANDING UNITS



#### SWIVEL HEADS



#### MULTI-SPINDLE HEADS



#### FLOATING UNITS



### TOOL HOLDERS

#### ROTATING



## TOOL INTERFACE

#### HSK™



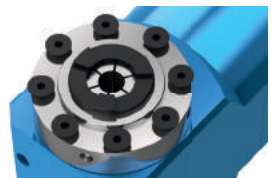
#### MILLING ARBOR

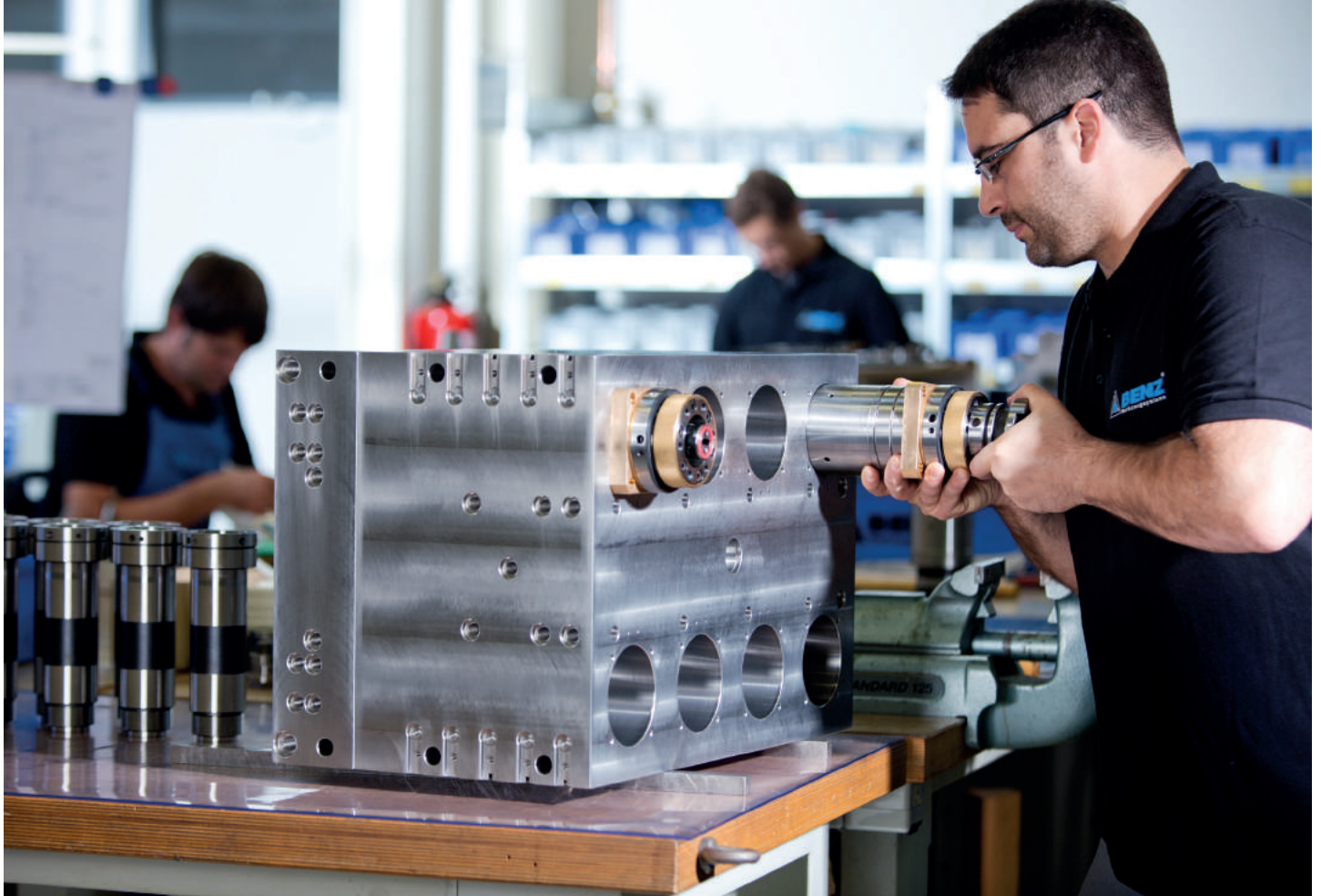


#### WELDON | WHISTLE NOTCH



#### SAW BLADE FLANGE





# THE KNOW- HOW FACTORY

# MACHINE TOOLING TECHNOLOGY

## UNITS FOR PROCESSING METAL AND WOOD / COMPOSITE MATERIALS

— METAL  
— WOOD / COMPOSITE MATERIALS

### METAL

#### MULTI-SPINDLE DRILLING HEADS



#### EXCHANGEABLE UNITS (SUPPLEMENTARY MODULES)



### WOOD / COMPOSITE MATERIALS

#### MULTI-SPINDLE DRILLING HEADS



#### AGGREGATES FOR MACHINING CENTRES



### METAL AND WOOD / COMPOSITE MATERIALS

#### MOTOR SPINDLES



#### MOTORS



#### 5-AXIS UNITS



### METAL AND WOOD / COMPOSITE MATERIALS

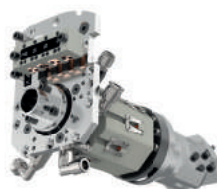
#### C-AXIS



#### PIVOTING AXIS



#### ROTARY DISTRIBUTOR



### WOOD

#### Z-AXIS

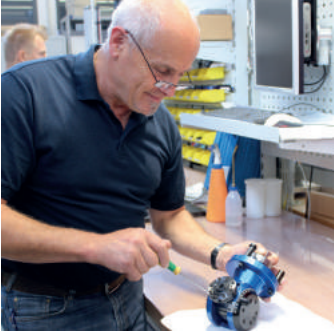




# SERVICE

## CUSTOMER-SPECIFIC, VALUE-PRESERVING, ECONOMICAL

### ► SERVICES



#### ► Repair service

Rapid and professional analysis of the problem  
Diagnosis and repair recommendation provided within 5 working days  
Upon request: general refurbishing



#### ► ExpressService

Very short throughput times  
Repairs done at a fixed price  
48-hour ExpressService for wood-processing units and selected live tools



#### ► Individualized Crash Package

Minimize downtime costs  
Preferable for customer-specific solutions  
Contains wearing and special parts



#### ► Preventative maintenance

Prevention reduces the number of unplanned failures, boosts unit productivity  
Maintains the product in a flawless condition / general refurbishment  
Wearing parts are exchanged  
Ideal when operation is idled

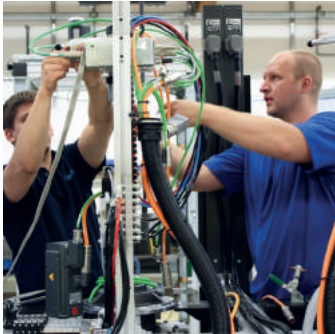


## ► SERVICES



### ► Spare parts management

Delivery of original precision spare parts  
High availability of parts  
Express shipment of spare parts when needed



### ► Global service

If needed and after consultation, service installers will come to you at your location.



### ► Service Hotline

Qualified staff is at your service in case of any questions or problems  
Contact details: please check our websites [www.zimmer-group.com](http://www.zimmer-group.com) and [www.benz-tools.com](http://www.benz-tools.com)

## CONTACT ADDRESSES

### GERMANY HEADQUARTERS:

**ZIMMER GROUP**  
Am Glockenloch 2  
D-77866 Rheinau  
T +49 78449139-0  
F +49 78449139-1199  
info@zimmer-group.de  
[www.zimmer-group.de](http://www.zimmer-group.de)

### BELGIUM, LUXEMBOURG:

**ZVS TECHNIEK BV**  
Langenakker 131  
NL-5731 KB Mierlo  
T +32 92779679  
F +31 492666379  
info@zvstechniek.nl  
[www.zvstechniek.nl](http://www.zvstechniek.nl)

### PNEUVANO BVBA/SPRL

Koralenhoeve 4  
BE-2160 Wommelgem  
T +32 33553220  
F +32 33553221  
info@pneuvano.com  
[www.pneuvano.com](http://www.pneuvano.com)

### DENMARK:

**UC DENMARK AS**  
Lollandsvej 33  
DK-5500 Middelfart  
T +45 64400970  
F +45 64400971  
info@ucdk.com  
[www.ucdk.com](http://www.ucdk.com)

### FINLAND:

**MOVETEC OY**  
Hannuksentie 1  
FI-02270 Espoo  
T +358 9525923 0  
F +358 9525923 33  
info@movetec.fi  
[www.movetec.fi](http://www.movetec.fi)

### FRANCE:

**ZIMMER GROUP FRANCE SARL**  
3, Allée de Stockholm  
FR-67014 Strasbourg  
T +33 388833896  
F +33 388833975  
info@zimmer-group.fr  
[www.zimmer-group.fr](http://www.zimmer-group.fr)

### UNITED KINGDOM, IRELAND:

**ZIMMER GROUP (UK) LTD.**  
Bretby Business Park  
G90 Repton House  
Ashby Road, Bretby  
GB-Burton on Trent, DE15 0YZ  
T +44 1283542103  
F +44 5603416852  
info@zimmer-group.co.uk  
[www.zimmer-group.co.uk](http://www.zimmer-group.co.uk)

### ITALY:

**ZIMMER GROUP ITALIA S.R.L.**  
Viale Montegrappa, 7  
IT-27100 Pavia  
T +39 382571442  
F +39 382571473  
info@zimmer-group.it  
[www.zimmer-group.it](http://www.zimmer-group.it)

### CROATIA:

**INOTEH D.O.O.**  
K. Železnici 7  
SI-2345 Bistrica ob Dravi  
T +386 26730136  
F +386 26652081  
info@inoteh.si  
[www.inoteh.si](http://www.inoteh.si)

### NETHERLANDS:

**ZVS TECHNIEK BV (NL)**  
Langenakker 131  
NL-5731 KB Mierlo  
T +31 492665176  
F +31 492666379  
info@zvstechniek.nl  
[www.zvstechniek.nl](http://www.zvstechniek.nl)

### ZVS TECHNIEK BV

Grotiuslaan 3  
NL-8024XM Zwolle  
T +31 384541017  
F +31 384526777  
info@zvstechniek.nl  
[www.zvstechniek.nl](http://www.zvstechniek.nl)

### NORWAY:

**UC DENMARK AS**  
Lollandsvej 33  
DK-5500 Middelfart  
T +45 64400970  
F +45 64400971  
info@ucdk.com  
[www.ucdk.com](http://www.ucdk.com)

### POLAND:

**P.H. IBEMATIC GMBH**  
ul. Abramowskiego 84  
PL-10.241 Olsztyn  
T +48 895269320  
F +48 895269320  
ibematic1@wp.pl  
[www.ibematic.com.pl](http://www.ibematic.com.pl)

### P.P.H. WOBIT E.K.J

**OBER S.C.**  
ul. Gruszkowa 4  
PL-61-474 Poznań  
T +48 612227410  
F +48 612227439

### PORTUGAL, SPAIN:

**ZIMMER GROUP IBERIA S.L.**  
c/ Dámaso Alonso 22  
ES-28806 Alcalá de Henares / Madrid  
T +34 918822623  
F +34 918828201  
info@zimmer-group.es  
[www.zimmer-group.es](http://www.zimmer-group.es)

### ROMANIA:

**S.C. PARCON FREIWALD S.R.L.**  
Str. Depozitelor nr. 22  
RO-540240 Targu Mures  
T +40 265253088  
F +40 365814048  
comert@parcon.ro  
[www.parcon.ro](http://www.parcon.ro)

### SWEDEN:

**UC DENMARK AS**  
Lollandsvej 33  
DK-5500 Middelfart  
T +45 64400970  
F +45 64400971  
mpe@ucdk.com  
[www.ucdk.com](http://www.ucdk.com)

### SWITZERLAND, LIECHTENSTEIN:

**ZIMMER GMBH SUBSIDIARY SOLOTHURN**  
Westbahnhofstraße 2  
CH-4500 Solothurn  
T +41 326215152  
F +41 326215153  
info@zimmer-group.ch  
[www.zimmer-group.ch](http://www.zimmer-group.ch)

### SLOVAK REPUBLIC,

**CZECH REPUBLIC: ZIMMER GROUP SLOVENSKO S.R.O.**  
M. R. Stefánika 157/45  
SK-01701 Povazska-Bystrica  
T +42 1424331788  
F +42 1424331266  
info@zimmer-group.sk  
[www.zimmer-group.sk](http://www.zimmer-group.sk)

### SLOVENIA:

**INOTEH D.O.O.**  
K. Železnici 7  
SI-2345 Bistrica ob Dravi  
T +386 26730136  
F +386 26652081  
info@inoteh.si  
[www.inoteh.si](http://www.inoteh.si)

### TURKEY:

**ENTEK OTOMASYON URUNLERI SAN VE TIC A.S.**  
Mahmutbey Mah. Tasocagi  
Yolu No. Cad.  
TR-34218 Bagcilar-Istanbul  
T +90 8502014141  
F +90 2122211519  
zimmer@entek.com.tr  
[www.entek.tr](http://www.entek.tr)

### HUNGARY:

**NESA HUNGARY LTD**  
Fillér u. 61  
HU-1022 Budapest  
T +36 13161719  
F +36 13168273  
berezckyl@gmail.com

### AUSTRIA:

**ZIMMER GROUP**  
Am Glockenloch 2  
D-77866 Rheinau  
T +49 78449139-0  
F +49 78449139-1199  
info@zimmer-group.de  
[www.zimmer-group.de](http://www.zimmer-group.de)

**ASP AUTOMATION TECHNOLOGY ING. WALTER SCHWEIGHOFER GMBH**  
Oberfeistritz 79  
AT-8184 Anger  
T +43 317533390  
F +43 3175333939  
office@asp-gmbh.at  
[www.asp-gmbh.at](http://www.asp-gmbh.at)

### ASP AUTOMATION TECHNOLOGY

**ING. PRENNER GMBH**  
Dammgasse 13  
AT-7111 Parndorf  
T +43 21662461  
F +43 21662762  
prenner@asp1.at  
[www.asp1.at](http://www.asp1.at)

### CANADA, MEXICO, UNITED STATES:

**SOMMER AUTOMATIC INC.**  
130 Matheson Boulevard East, Unit #14  
CA-L4Z 1Y6 Mississauga, Ontario  
T +1416 7666371  
F +1416 7666370  
sales@sommerautomatic.com  
[www.sommerautomatic.com](http://www.sommerautomatic.com)

### INTERCON AUTOMATION PARTS INC.

26 Saunders Road  
CA-L4N9A8 Barrie, ON  
T +1705 7277801  
F +1705 7262917  
sales@interconap.com  
[www.interconautomation.com](http://www.interconautomation.com)

**BRAZIL, ARGENTINA, PERU, COLOMBIA, BOLIVIA, VENEZUELA, CHILE, PARAGUAY, ECUADOR, GUYANA, URUGUAY: ZIMMER GROUP SOUTH AMERICA IMP. EXP. LTDA**  
Rua Wolsir A. Antonini, 120, Bairro Fenavinho  
BR-95700-0000 Bento Gonçalves – RS  
T +55 5421025400  
F +55 5434515494  
info@zimmer-group.com.br  
[www.zimmer-group.com.br](http://www.zimmer-group.com.br)

### AUSTRALIA:

**BINZEL PTY LTD.**  
42 Hinkler Road, Mordialloc  
AU-3195 Victoria  
T +61 39580 6500  
F +61 395808796  
sales@binzel.com.au  
[www.binzel.com.au](http://www.binzel.com.au)

### SINGAPORE, THAILAND, MALAYSIA, INDONESIA, PHILIPPINES, VIETNAM, CAMBODIA, MIYAMA, BRUNEI, LAOS: ZIMMER GROUP

**JOERG SCHLEICHER**  
Ubi Road 2, #07-25 Zervex 8  
SG-408538 Singapore  
T +65 64846980  
F +65 63653089  
zimmer-group.sg@asia.com  
[www.zimmer-group.com](http://www.zimmer-group.com)

### CHINA:

**ZIMMER GROUP CHINA LTD.**  
A 1608-1609, 1088 Xinjingqiao Road  
CN-201206 Pudong/Shanghai,  
T +86 2161630506  
F +86 2161005672  
sales@zimmer-group.cn  
[www.zimmer-group.cn](http://www.zimmer-group.cn)

### NBK-NABEYA BI-TECH (SUZHOU) CO. LTD.

No., 76, Huangpujiang Road  
CN-215500 Jiangsu  
T +86 51252901560  
F +86 51252905130  
info@nbk1560-chn.com.cn  
[www.nbk1560-chn.com.cn](http://www.nbk1560-chn.com.cn)

### ISRAEL:

**G-G YAROM GETTER LTD.**  
4 Baltimore Street  
IL-4951015 Petach Tikva  
T +97 235570115  
F +97 2355 93 246  
gginfo@gg.co.il  
[www.gg.co.il](http://www.gg.co.il)

### JAPAN:

**NBK-NABEYA BI-TECH KAISHA**  
Toko-Taichi-Seki City  
JP-501-3939 Gifu  
T +81 575237183  
F +81 575237184  
info@nbk1560.com  
[www.nbk1560.com](http://www.nbk1560.com)

### SOUTH KOREA:

**ZIMMER GROUP KOREA LTD.**  
Room no. 118, A Dong,  
Woorim Lions Valley, 425, Chungchun-Dong,  
KR-Bupyeong-Ku INCHEON / SEOUL 403-030  
T +82 323307636  
F +82 323307637  
info@zimmer-group.kr  
[www.zimmer-group.kr](http://www.zimmer-group.kr)

### SPC TECHNOLOGY, INC.

1301 Byucksan digital valley 5  
KR-153-801 Gasan-Dong, Geumcheon-Gu, Seoul  
T +82 22082-5858  
F +82 22082-5880  
spc@spctech.co.kr  
[www.spctech.co.kr](http://www.spctech.co.kr)

### TAIWAN:

**AL-CHARM ENTERPRISE CO., LTD.**  
6F-1, No. 888, Chingkuo Road,  
TW-33051, Tao Yuan  
T +886 33171155  
F +886 33176348  
sales@al-charm.com.tw  
[www.al-charm.com](http://www.al-charm.com)

## CONTACT ADDRESSES BENZ:

### WORLDWIDE

(GERMANY HEADQUARTERS)  
**BENZ GMBH TOOLING SYSTEMS**  
Im Mühlegrün 12  
D-77716 Haslach  
T +49 7832 704-0  
F +49 7832 704-8001  
info@benz-tools.de  
[www.benz-tools.de](http://www.benz-tools.de)

### NORTH AMERICA:

**BENZ INCORPORATED**  
8325-J Arrowridge Blvd. |  
Charlotte, NC 28273  
T +1704 529 5300  
F +1704 529 5009  
mail@benz-inc.com  
[www.benz-inc.com](http://www.benz-inc.com)



# THE KNOW- HOW FACTORY

The contents and data correspond to the status as of printing. Edition 07/2014

This catalog was created with great care and all information has been checked for accuracy. However, we assume no liability for incorrect or incomplete information. Zimmer Group reserves the right to technical changes and improvements through constant ongoing development of products and services. All text, images, depictions and illustrations in this catalog are the property of Zimmer Group and protected by copyright. Any duplicating, editing, changing, translating, filming, processing or saving in electronic systems is prohibited without the consent of Zimmer Group.

## ZIMMER GROUP—THE KNOW-HOW FACTORY

NEW TECHNOLOGY, COMPONENTS, BUSINESS DIVISIONS AND LOCATIONS ACROSS THE GLOBE—OUR COMPANIES HAVE BECOME STRONG AND OUR RANGE OF PRODUCTS HAS GROWN MORE DIVERSE.

THE NEW **ZIMMER GROUP** UMBRELLA BRAND HELPS GIVE YOU DIRECTION AMONG THIS NEW DIVERSITY. IT COMBINES THE COMPANIES ZIMMER GMBH, ZIMMER KUNSTSTOFFTECHNIK, ZIMMER DAEMPFUNGSYSTEME AS WELL AS BENZ WERKZEUGSYSTEME INTO ONE PARTNER FOR YOUR PROJECTS: THE KNOW-HOW FACTORY.

CHALLENGE US. DISCOVER THE ENTIRE WORLD OF ZIMMER GROUP! IF YOU HAVE QUESTIONS ABOUT THE NEW ZIMMER GROUP AND OUR TECHNOLOGY, WE WOULD BE HAPPY TO ANSWER THEM.

## CONTACT

Zimmer Group  
Am Glockenloch 2  
D-77866 Rheinau  
T +49 7844 9139-0  
F +49 7844 9139-1199  
info@zimmer-group.de  
[www.zimmer-group.de](http://www.zimmer-group.de)

